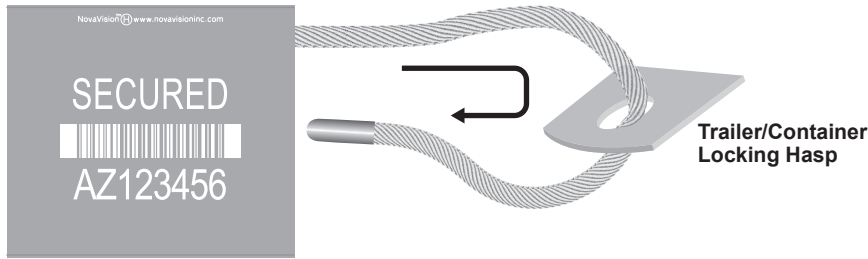


MS-C3.5T-18B Double Locking Cable Seal Installation Instructions

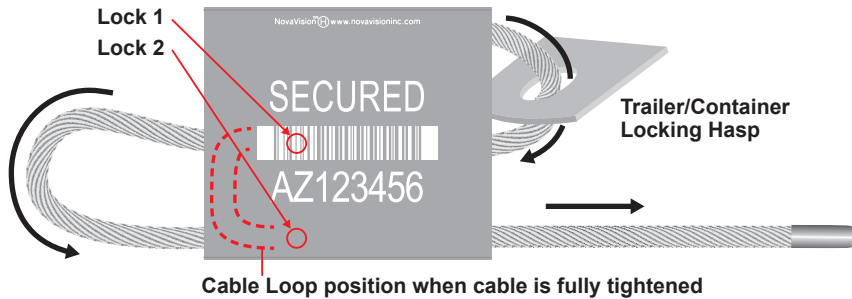
1. Close trailer/container door and position locking hasp (not included).
2. Thread the free cable end through the hasp and loop back into the adjacent hole on the lock.



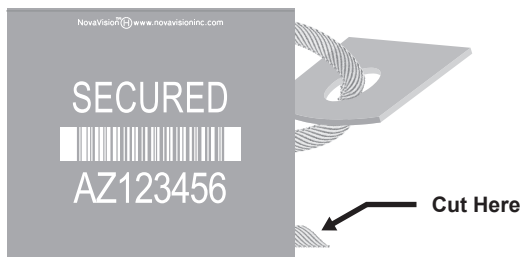
3. Pass the cable through the lock body until it exits the lock body; pull the cable tight to remove all slack on the hasp side.



4. Reinsert the free end of the cable into the lock until it exits the lock body; pull cable tight to remove all slack from the second loop.



5. After removing all slack from the loops and lock assembly, cut off the free cable protruding from the lock body as close as possible to the lock.



6. To remove cable, cut here with cable cutter.

